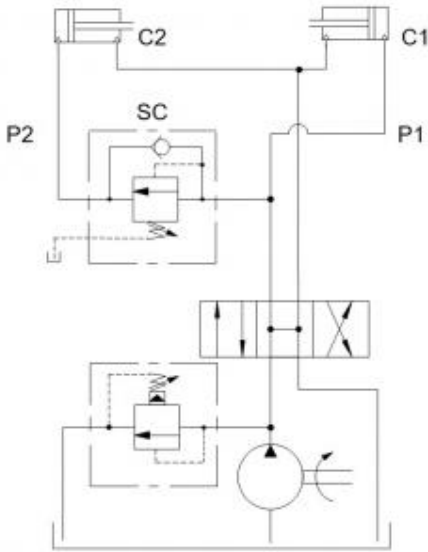


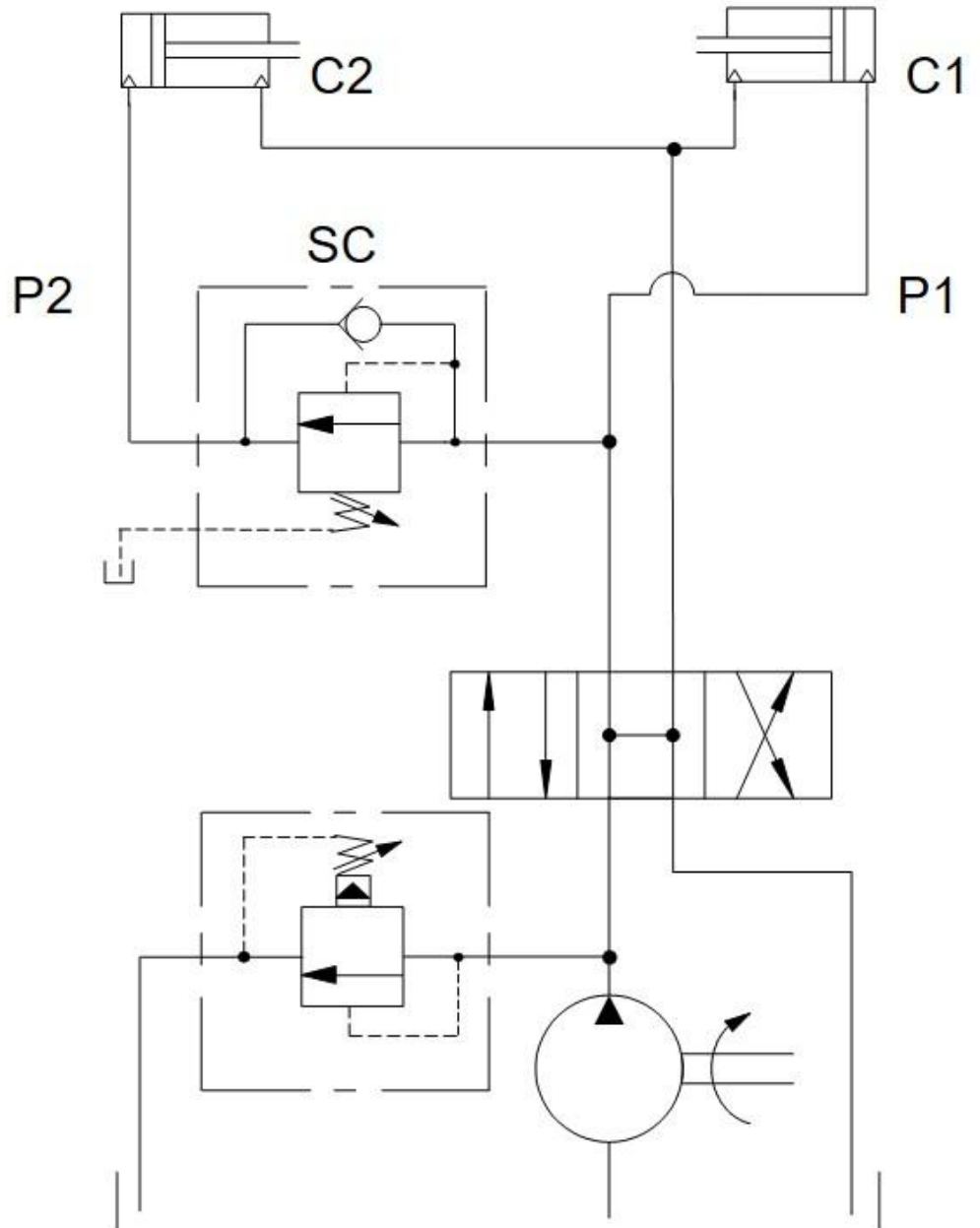
Prepared for :

Prepared by :

Schematics



Summary



Related Products

Cartridges

SCEA - Direct-acting sequence valve with reverse flow check

In this example, a direct-acting sequence valve doesn't allow flow to cylinder C2 until pressure P1 on cylinder 1 exceeds the setting of the sequence valve.

- **Direct-acting sequence valve: SC*A**

Benefits of this circuit arrangement:

- Depending on the setting of the sequence valve, the cylinder C1 will fully extend or exert a certain force before cylinder C2 starts to move.
- The sequence valve SC will crack open insensitive to backpressure P2.
- The built in reverse free flow check of the SC*A allows cylinder C2 to retract when the directional valve is shifted or when external forces are applied.