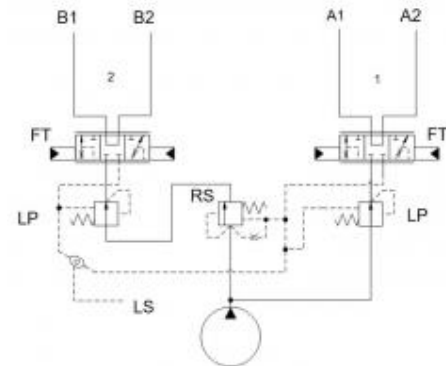


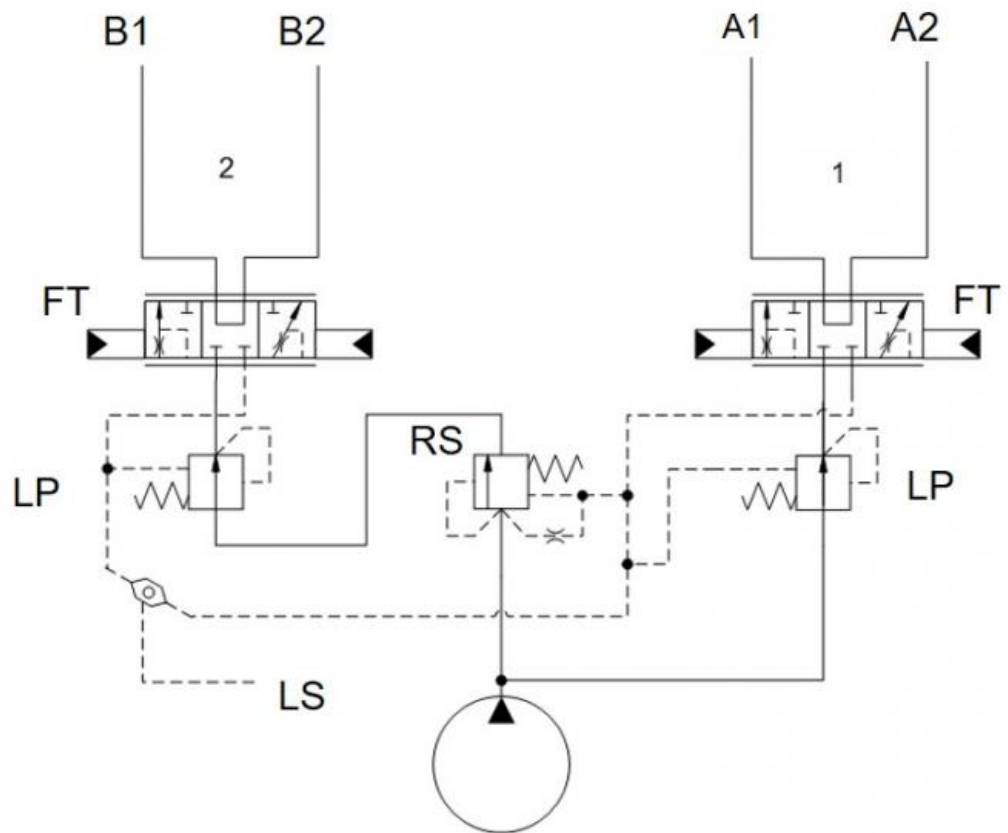
Prepared for :

Prepared by :

Schematics



Summary



Related Products

Cartridges

RSDC - Pilot-operated, balanced piston sequence valve

FTEK - 3-way, 3-position, proportional directional valve with center bleed down and load sense

LPBC - Normally open, modulating element

In this example, a sequence valve RS*C, gives priority flow to circuits A1 & A2 before circuits B1 & B2 can be fed. Flow control for 2 users with load-sensing (LS) feedback to the pump is integrated into the proportional valve type FT*K.

- **Sequence valve:** RS*C
- **Proportional valve with LS port:** FT*K
- **Pressure compensator:** LP*C

Benefits of this circuit arrangement:

- The sequence valve RS*C ensures that flow to circuits A is satisfied before circuits B can be supplied.
- The 3/3-way proportional valve FT*K with upstream restrictive pressure compensators LP*C can control motors or cylinders. The LP*C maintains a constant pressure drop across the FT*K of 200 psi which ensures steady flow control in the four legs.