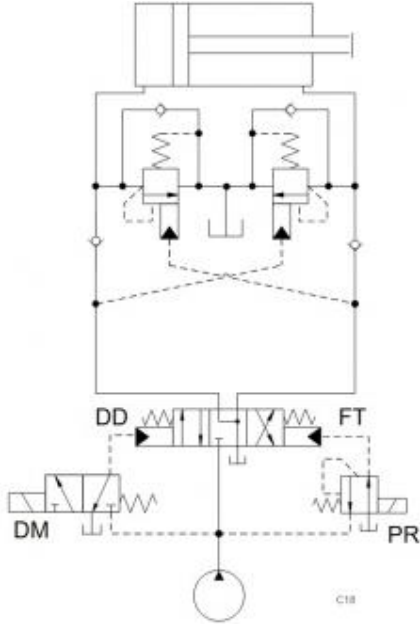


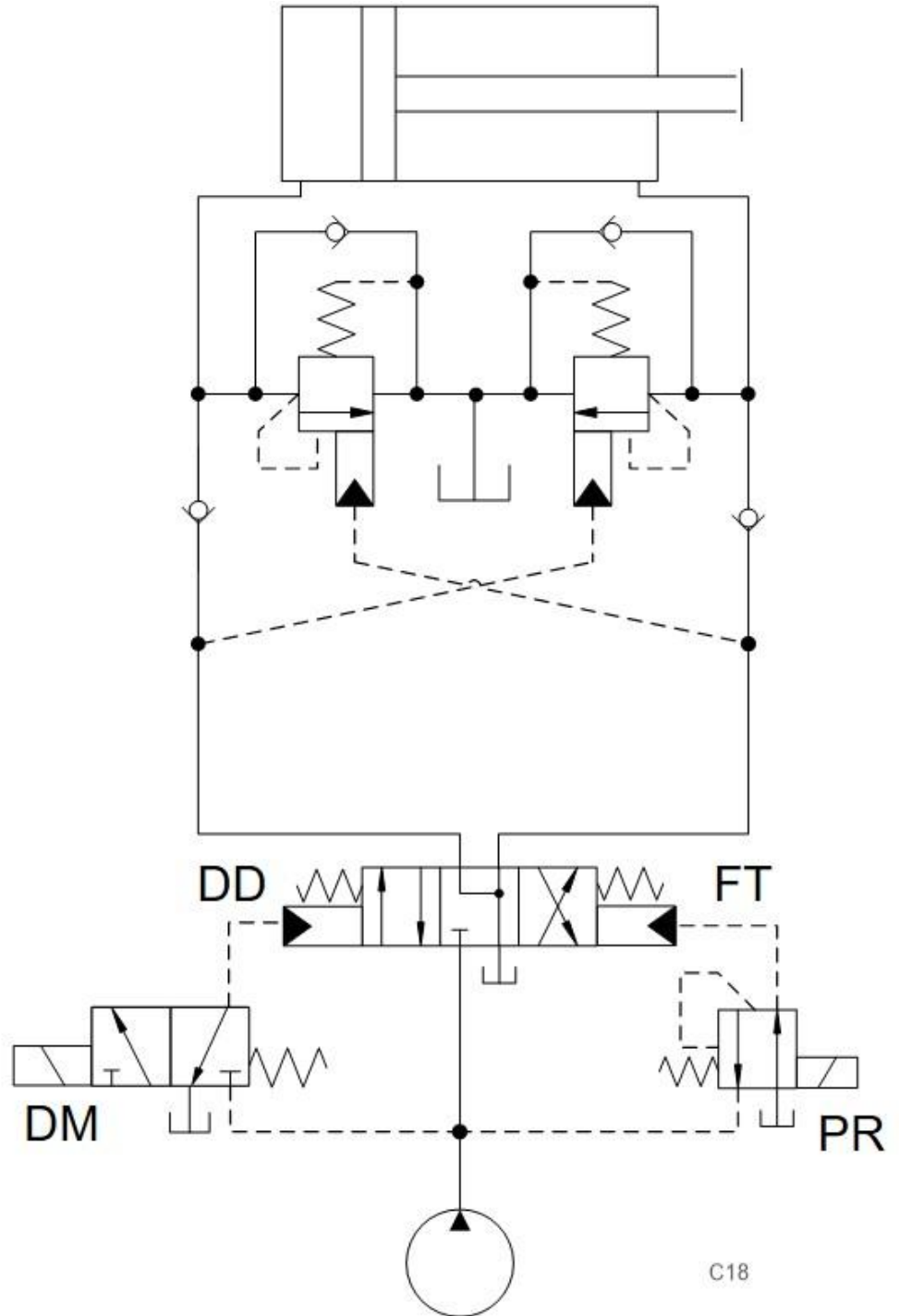
Prepared for :

Prepared by :

Schematics



Summary



Related Products

Cartridges

- DDDC* - 4-way, 3-position, pilot-to-shift directional valve
- FTCC* - 4-way, 3-position, meter in proportional directional valve
- DMDA* - 3-way, solenoid-operated directional spool valve
- PRDL* - Electro-proportional, direct-acting, pressure reducing/relieving valve with open transition

3/4-way directional valves use the same cavities for standard valves as for proportional valves.

- **3/4-way hydraulically operated directional valve:** DD*C-XY*
- **3/4 way hydraulically operated proportional valve:** FT*C-XY*
- **2/3-way solenoid-directional control valve:** DMDA-*P*
- **Proportional pressure control:** PRDL

Benefits of this circuit arrangement:

- The directional valve DD*C can be replaced with the proportional FT*C-XY* in the same cavity with the same porting.
- The solenoid valve DMDA-*P* can be replaced in the same cavity with a proportional pressure control valve PRDL to operate the FT*C.