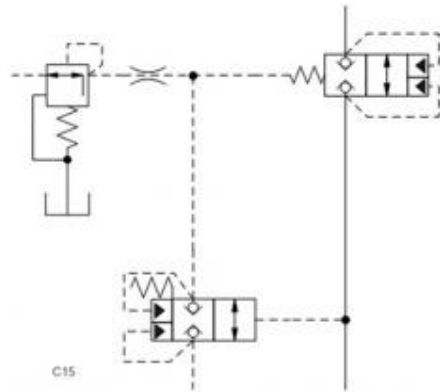


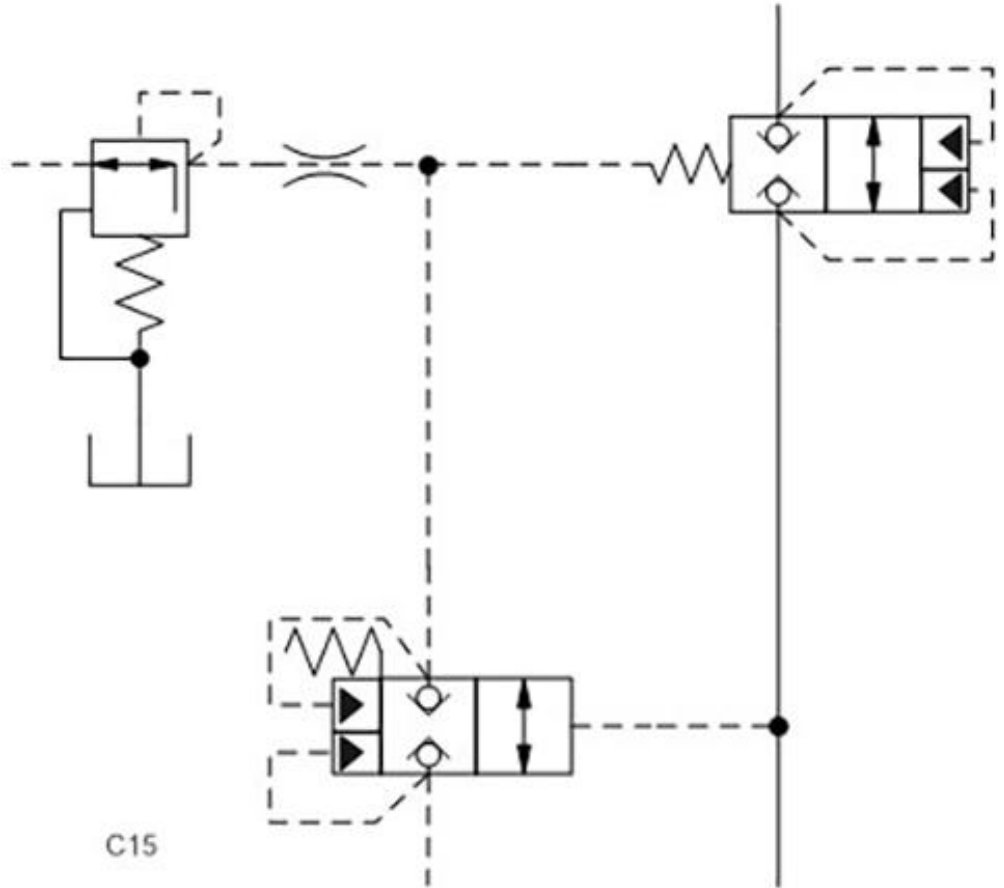
Prepared for :

Prepared by :

## Schematics



## Summary



## Related Products

### Cartridges

- LKDC* - Pilot-to-open, spring-biased closed, unbalanced poppet logic element
- LODC* - Pilot-to-close, spring-biased closed, unbalanced poppet logic element
- PRBB* - Direct-acting, pressure reducing/relieving valve

Note: Standard kickdown valves RQ\*B have a long response time of about 20 ms (that can be beneficial) and also have leakage since they are spool-type valves. A circuit with a pressure control valve PR\*\*, a normally open LO\*, and a normally closed LK\* allows a leak-free kickdown function with optional indication of the valve position.

- **Logic valve pilot-to-open:** LK\*C
- **Logic valve pilot-to-close:** LO\*C
- **Pressure control:** PR\*B

Benefits of this circuit arrangement:

- The pressure P1 on the supply of this circuit sees no leakage into the pilot port (3) of the LKDC and port 2 of the LO\*C. The LKDC opens when P1 pressure is 0.55 times larger than the pressure at port 1 of valve LKDC. As soon as the LK opens, the pilot pressure collapses and the LO\*C valve will open.
- The logic valve LO\*C can be a high-capacity valve - up to 320 gpm. It could also have a position switch to monitor the unloading function.