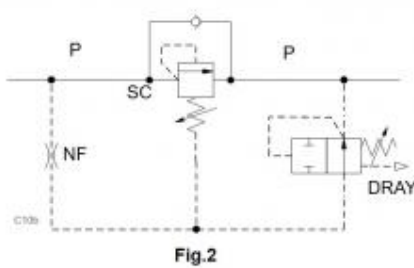
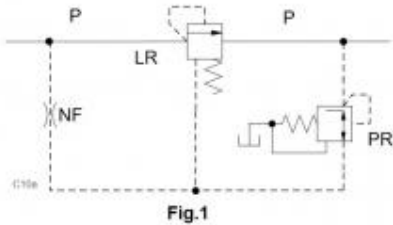


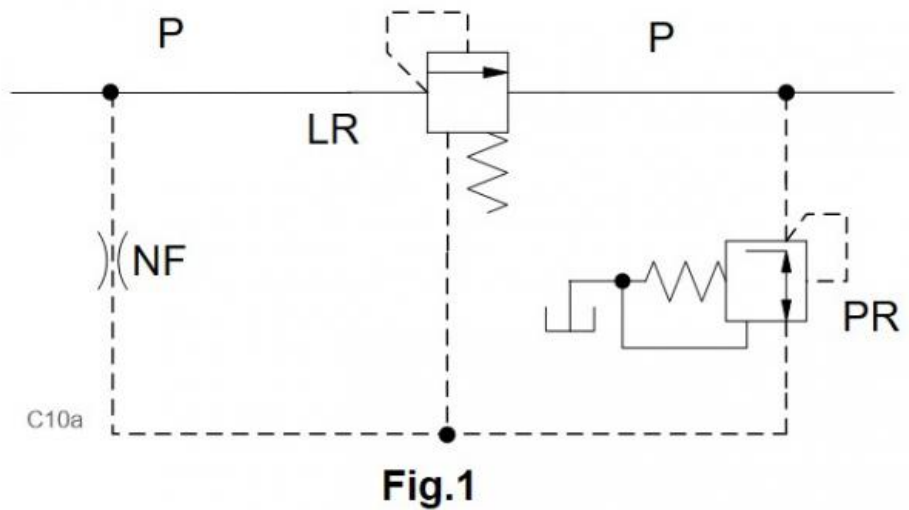
Prepared for :

Prepared by :

## Schematics



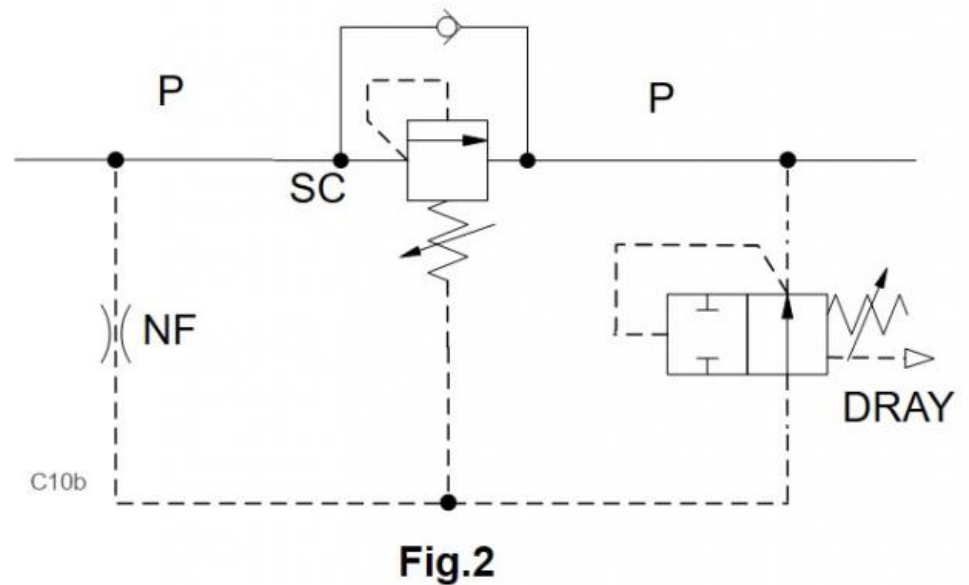
## Summary



## Related Products

### Cartridges

- PRBB* - Direct-acting, pressure reducing/relieving valve
- SCEA* - Direct-acting sequence valve with reverse flow check
- LRCC* - Normally closed, modulating element
- DRAY* - 2-way, pilot-to-shift directional valve with drain to port 4 - normally open
- NFAB* - Fully adjustable needle valve - pilot capacity



Figures 1 and 2 show high-capacity pressure-reducing valves

- Direct-acting, pressure-reducing valve: PR\*\*
- Direct-acting, sequence valve: SC\*\*
- Normally closed logic element: LR\*C

- 2/2 way directional valve: DRAY
- Needle valve NF\*\*

Benefits of this circuit arrangement:

- **Fig.1** uses a high-capacity LR\*\* logic valve as a main stage. When PR\*\* senses a pressure P below its setting, it opens. The flow will cause a pressure differential across the needle valve N. This opens the logic LR\*\* until pressure equals the setting of PR\*\*.