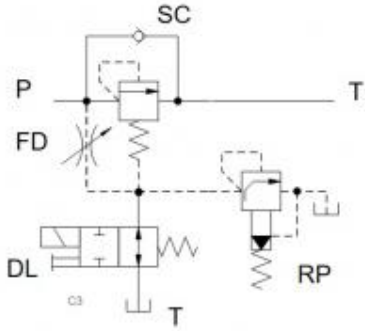


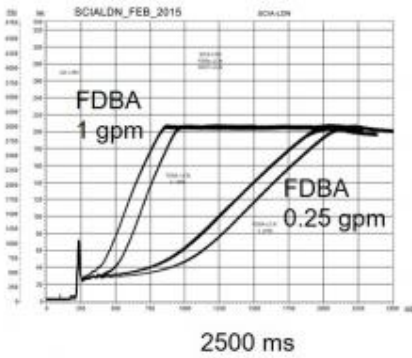
Prepared for :

Prepared by :

Schematics



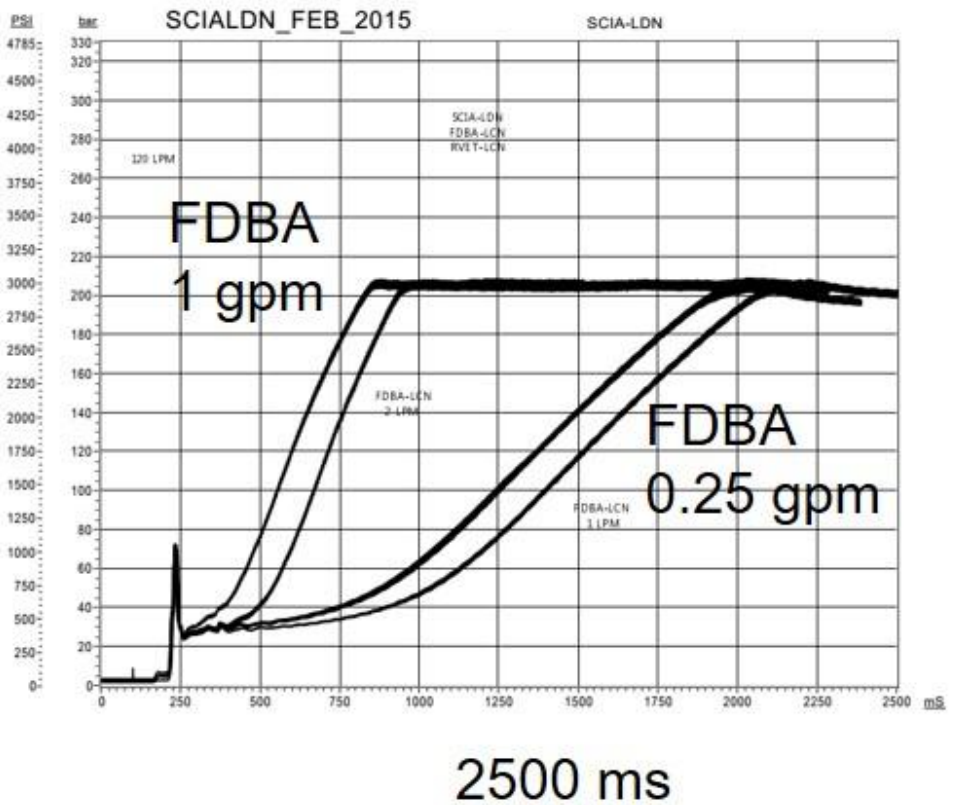
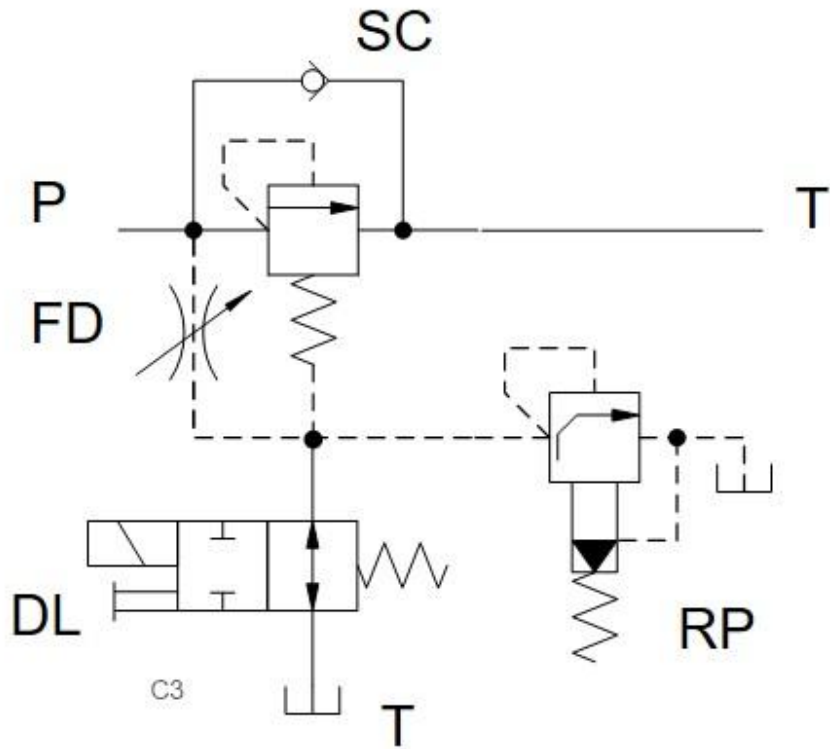
Summary



Related Products

Cartridges

- SCEA - Direct-acting sequence valve with reverse flow check
- RPET - Anti-Shock, pilot-operated, balanced poppet relief valve
- FDEA - Fully adjustable pressure compensated flow control valve with reverse flow check
- DLDA - 2-way, solenoid-operated directional spool valve



The anti-shock relief valve like RP*T has a fixed ramp time of about 300 ms and controls the relief function of the SC*AA FD*. A flow control valve can be used to increase the ramp time.

- Direct-acting sequence: **SC*A**
- Relief valves as pilot: **RP*T**

- Flow control: FD*A
- 2/2 way directional valve: DL*A

Benefits of this circuit arrangement:

- The 2/2-way DL*A directional valve fully unloads a pump to tank. When the pump is brought on line by energizing DL*A, the pressure build up in the system will follow ramp times as shown in the graph. The ramp time is adjusted via a FD*A with a flow rate of 0.25 to 1 gpm.