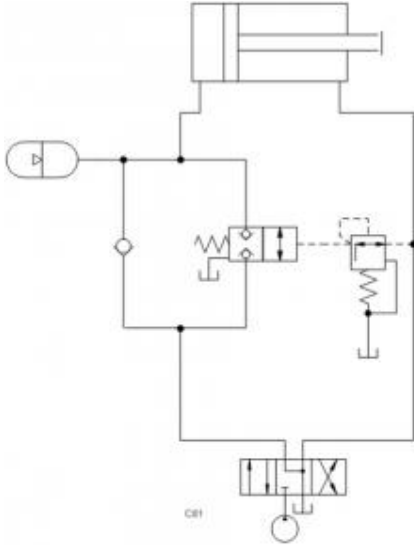


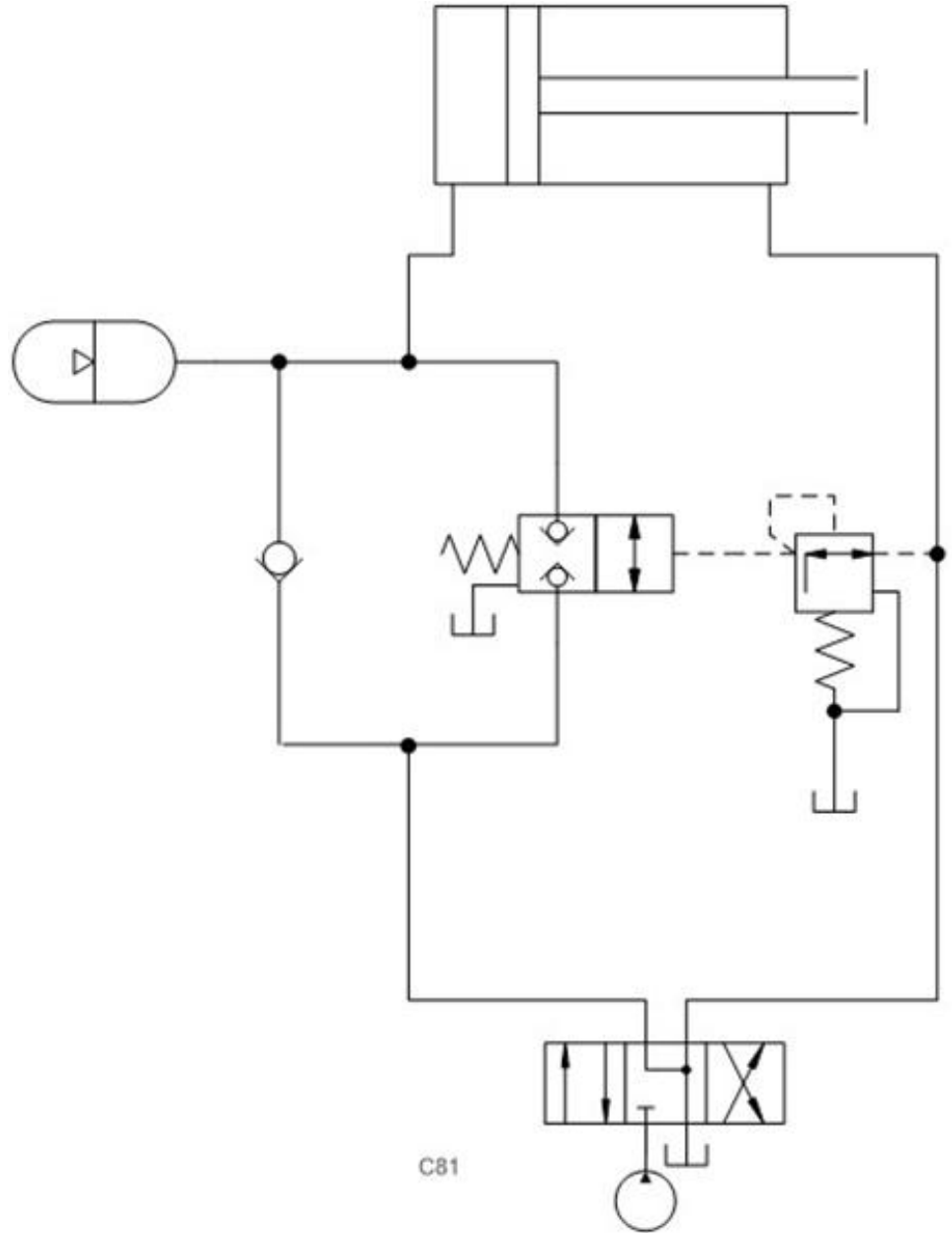
Prepared for :

Prepared by :

## Schematics



## Summary



## Related Products

### Cartridges

*DKDC* - Normally closed, balanced poppet, logic element - pilot-to-open  
*PRDB* - Direct-acting, pressure reducing/relieving valve

The circuit shows a balanced logic element that is used to unload the cylinder without decompression shock. The logic valve is opened by a low controlled pressure that is just sufficient to open the valve against flow forces.

- Normally closed balanced logic: **DK\*C, DK\*S**
- Direct-acting pressure-reducing/relieving: **PR\*\***

Benefits of this circuit arrangement:

- The circuit allows gentle unloading of the accumulator that is used to maintain a clamping force. Decompression shocks are common when a force is maintained with an accumulator.
- The advantage of the balanced logic element DK\*\* is that it opens smoothly regardless of the pressure to be unloaded. The opening force on the valve can be adjusted by the setting of the PRDB.