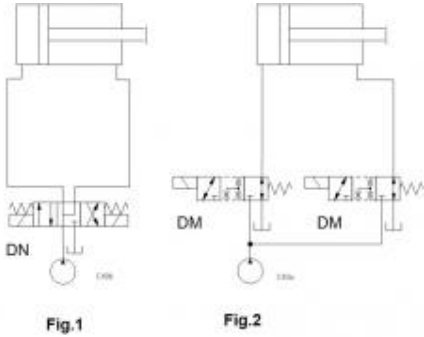


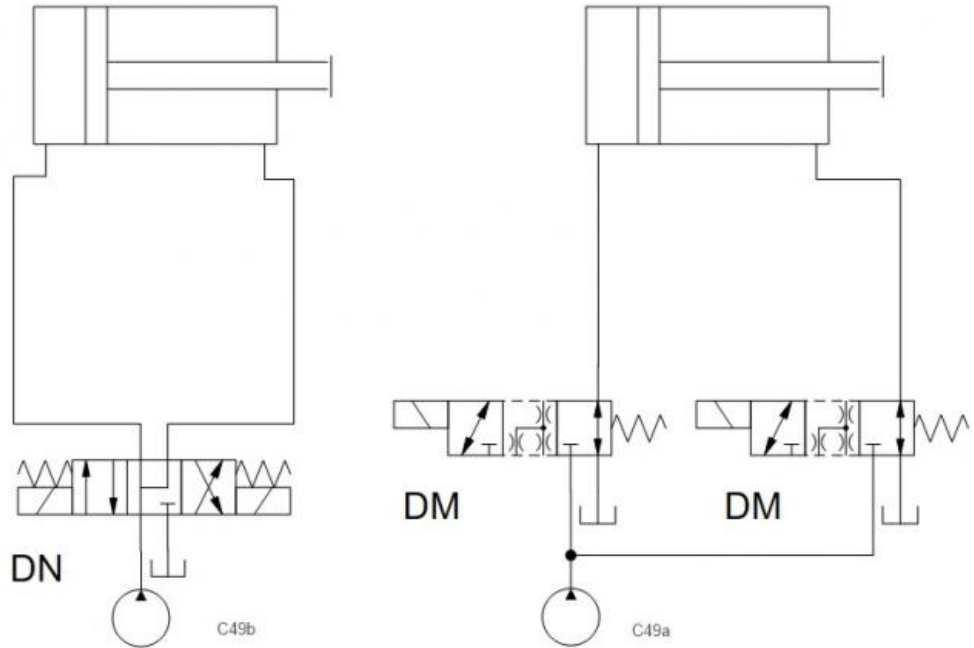
Prepared for :

Prepared by :

Schematics



Summary



Related Products

Cartridges

- DNDC - 4-way, 3-position, solenoid-operated directional spool valve
- DMDA - 3-way, solenoid-operated directional spool valve

Fig.1

Fig.2

The example shows directional valves for cylinder regeneration function.

- 3/4 way directional-control valve: DN*C
- 2/3 way directional-control valve: DM*A

Benefits of this circuit arrangement:

- **Fig.1** shows a 3/4-way directional valve DNDC with a spool-centered position for regeneration. The three positions of the directional valve allow extending the cylinder at regen speed in de-energized condition. By energizing the solenoids, the cylinder can be extended or retracting.
- **Fig.2** shows two 2/3-way valves as replacement for the 3/4-way valve. The circuit provides for four positions. With both solenoid valves de-energized, the cylinder sees tank pressure on both sides and does not move (additional load-holding valves might be required). With both valves energized, the cylinder extends in regen mode. With one 2/3-way valve activated the cylinder either extends or retracts.