

Prepared for :

Prepared by :

Schematics

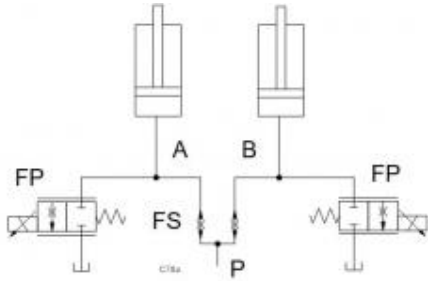


Fig. 1

Summary

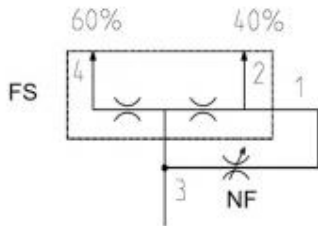


Fig. 2

Related Products

Cartridges

FPCC - Electro-proportional flow control valve - normally closed

NFBC - Fully adjustable needle valve

FSBD - High accuracy flow divider valve

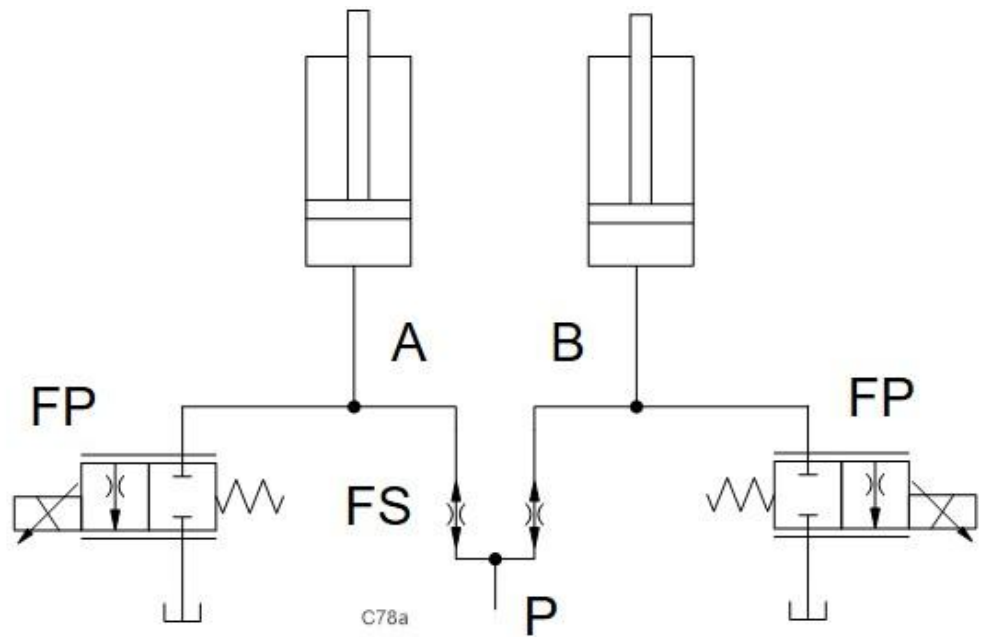


Fig. 1

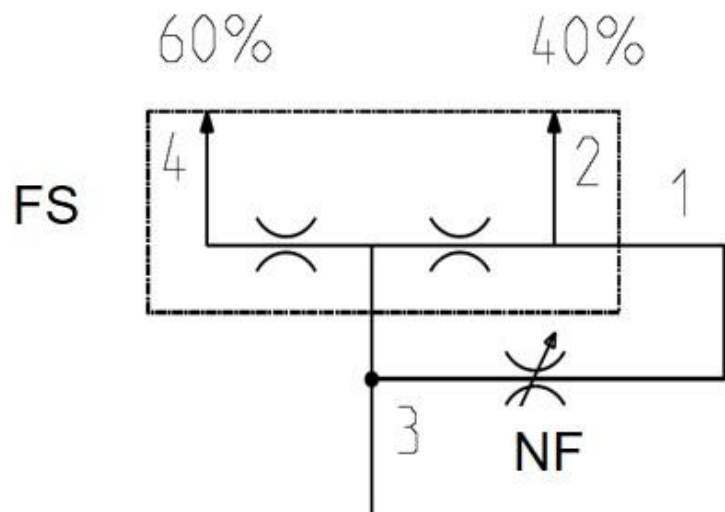


Fig. 2

The examples show flow divider that can be adjusted with additional flow control valves.

- Proportional flow control valve: FPC
- Needle valve: NF
- Flow divider: FS

Benefits of this circuit arrangement:

- **Fig.1** shows a flow divider/combiner to extend or retract two cylinders with equal speed. Additional proportional flow control valves in a closed loop (with LVDT on the cylinder) provide for more precision

without the need for high-capacity flow control valves.

- **Fig.2** shows a standard 60/40 flow control is parallel to the fixed orifice in the flow divider. The additional valve between port 3 and 1 can be used to adjust the split ratio.