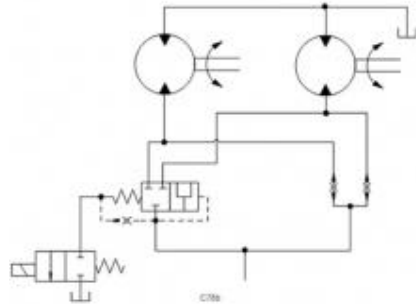


Prepared for :

Prepared by :

Schematics

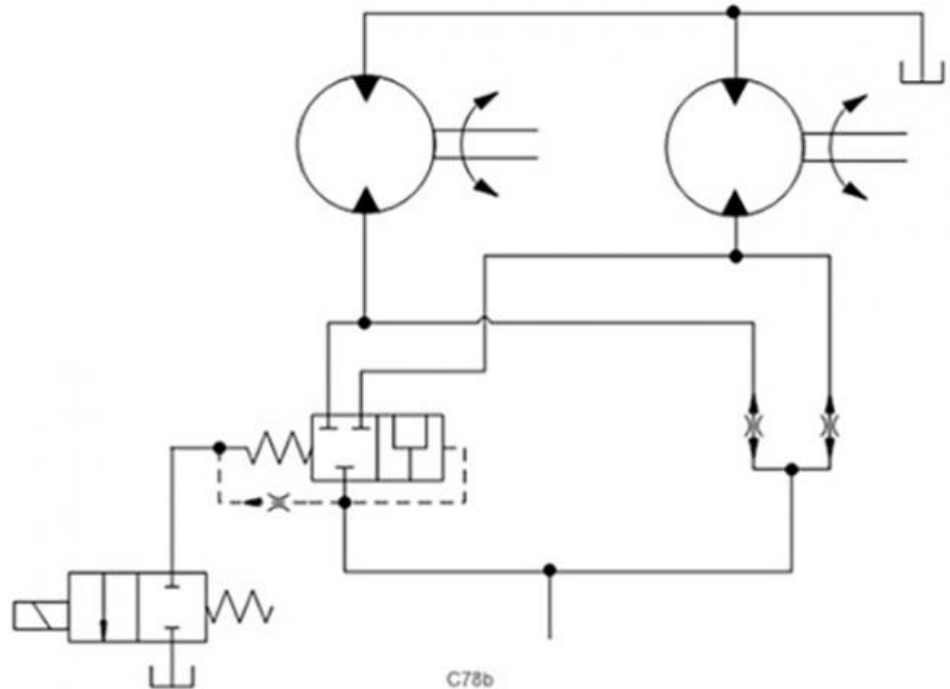


Related Products

Cartridges

DSCH - Low side, 3-position, hot oil shuttle valve
FSBD - High accuracy flow divider valve

Summary



The example shows a 2/3-way directional valve that is commonly used in parallel with a flow divider.

- 2/3-way, vent-to-shift diverter valve: **DS*X**
- Flow divider: **FS*D,FS*H**

Benefits of this circuit arrangement:

- The function of the DS*X valve is to bypass the FS*D divider/combiner valve in a limited-slip tractive circuit as follows: (1) While closed, the oil must go through the divider/combiner valves; and (2) when open, there is a large path around the divider/combiner valves for efficient high-speed operation.
- One pilot valve may be used to vent multiple diverter valves if blocking checks are used at port 1 of each diverter. If blocking checks are not used, there will be interaction between high and low pressure legs of the circuit.