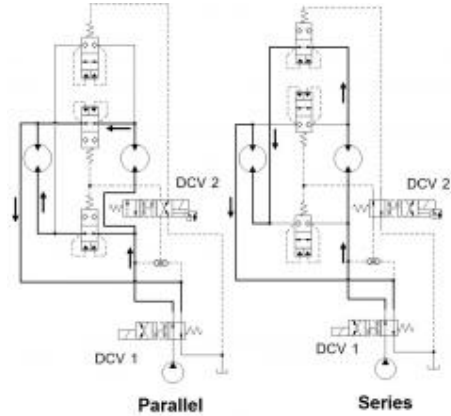


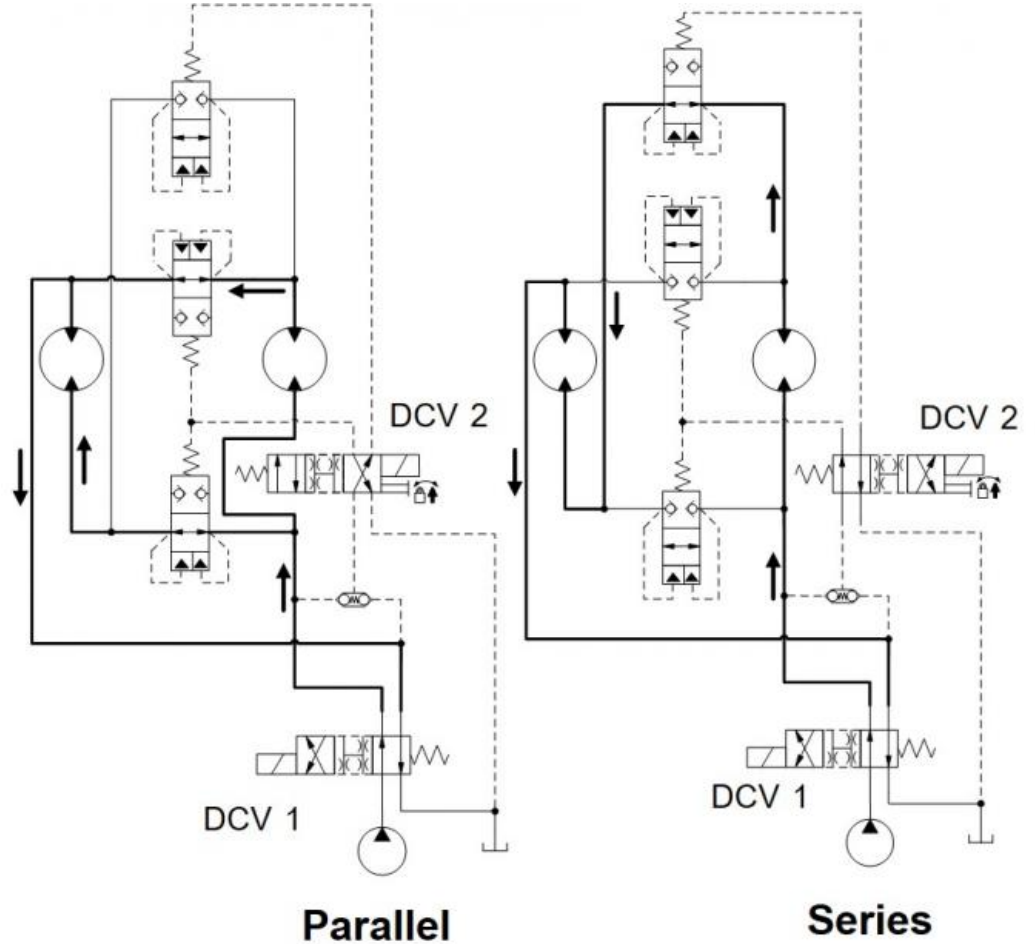
Prepared for :

Prepared by :

Schematics



Summary



Related Products

Cartridges

LODC - Pilot-to-close, spring-biased closed, unbalanced poppet logic element
DNCA - 4-way, 2-position, solenoid-operated directional spool valve with closed transition

The circuit shows two motors that can be operated in series or in parallel.

- Pilot-to-open logic element: LO°C
- 2/4 way solenoid valve: DN*A

Benefits of this circuit arrangement:

- Two motors are driven from a directional valve DCV 1 for high flow.
- Only one 2/2-way directional valve DCV 2 is required in the pilot line of three pilot-to-close logic elements LO°C to change from parallel to series drive.
- CAUTION: The two motors are mechanically linked if they are used to drive wheels of a vehicle. Due to leakage of the first motor, the second one receives less oil than the first one and may activate. Leakage compensation may be required.

See circuits: Motors in series with leakage compensation 1 and 2'.