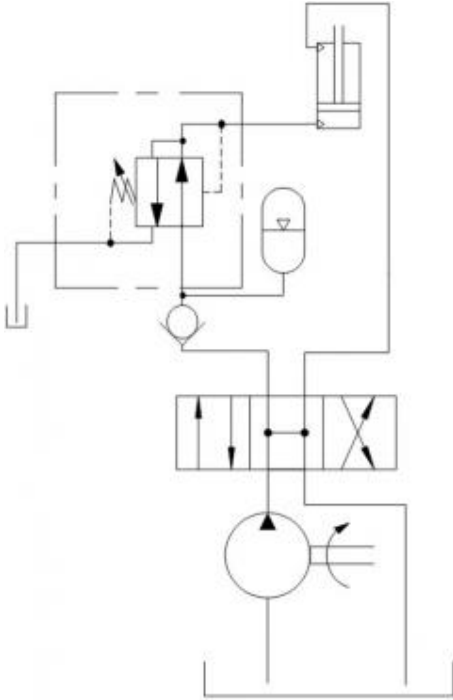


Prepared for :

Prepared by :

## Schematics

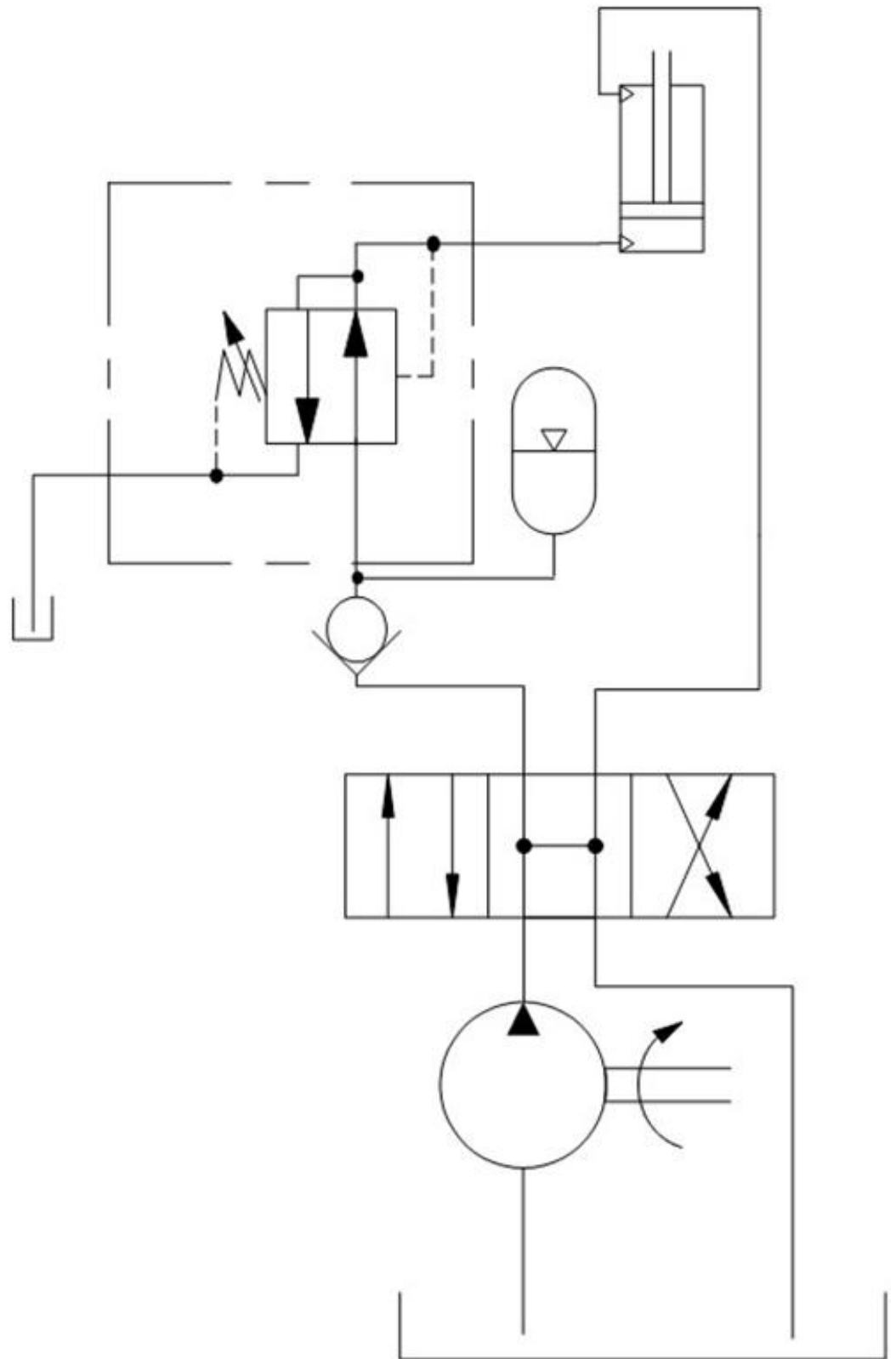
## Summary



## Related Products

### Cartridges

*PRBB* - Direct-acting, pressure reducing/relieving valve



In this example, a direct-acting pressure control valve is used to balance a cylinder load. An accumulator downstream from a check valve provides oil to keep the cylinder in position when the pump is idle and the directional valve is not activated.

- **Direct-acting pressure control:** PR\*B

Benefits of this circuit arrangement:

- A direct-acting pressure control valve PR\*B is used as the leakage is merely 0.01 gpm. Compared to pilot-operated pressure control valves, the losses to keep the cylinder in position are reduced by 90%.

- Pilot-operated pressure control valves PP\*\* can be replaced with direct-acting PR\*\* cartridges in the same cavity.