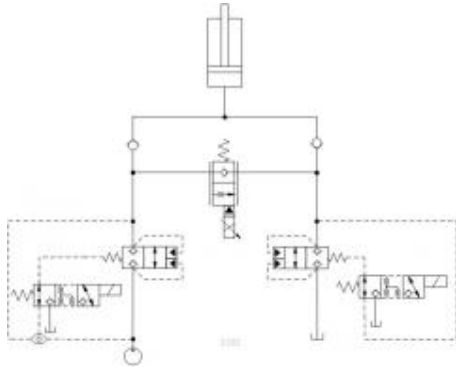


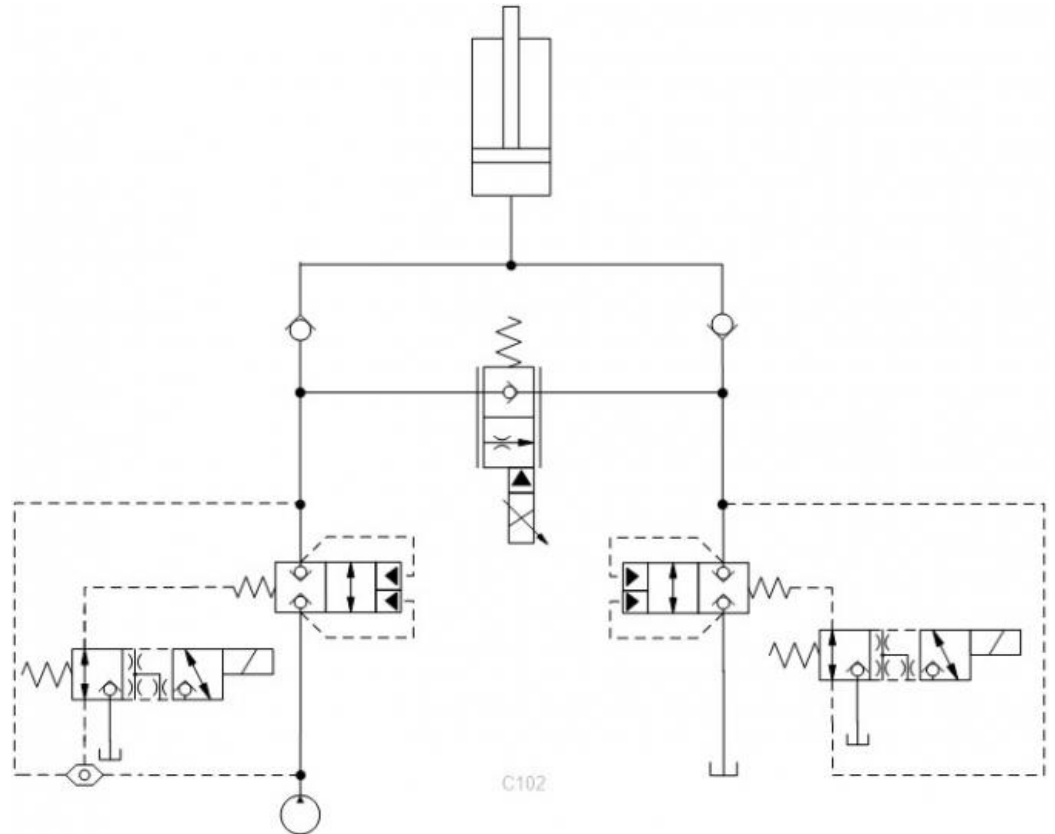
Prepared for :

Prepared by :

Schematics



Summary



Related Products

Cartridges

- LODC* - Pilot-to-close, spring-biased closed, unbalanced poppet logic element
- FPHK* - Pilot-operated, normally closed, electro-proportional throttle with reverse flow check
- DWDA* - 3-way, direct-acting, solenoid-operated directional poppet valve

The example shows a proportional valve and logic elements in a circuit for lifting and lowering a single-acting cylinder

- **Normally open logic element:** LO⁺C
- **Pilot-operated electro proportional throttle:** FPHK
- **3-way directional poppet valve:** DWDA

Benefits of this circuit arrangement

- The logic valves that connect the cylinder to either pressure supply or tank are available with optional position indicator. With both valves closed, the cylinder can't move regardless of the proportional flow control.
- The proportional flow control valve FPHK (60 gpm @ 200 psi Δ P) controls the lifting or lowering speed of the cylinder.