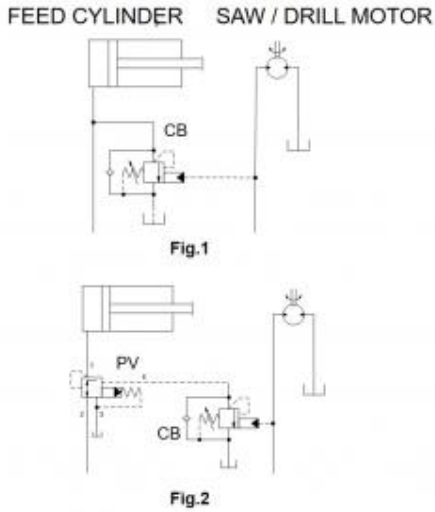


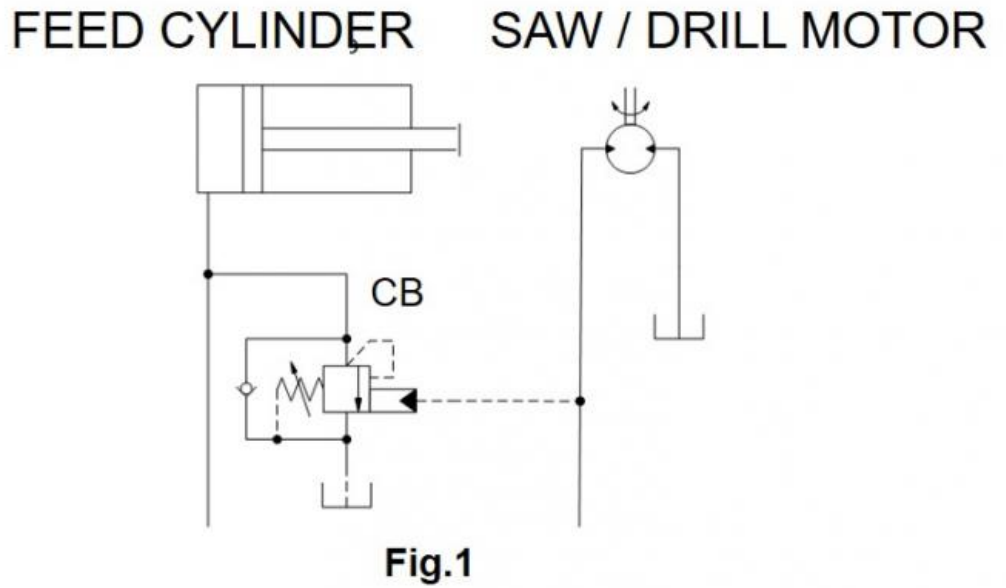
Prepared for :

Prepared by :

Schematics



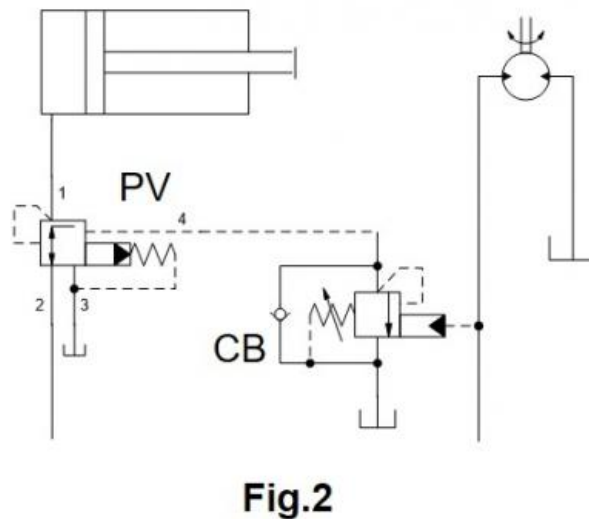
Summary



Related Products

Cartridges

- CBAB - 1.5:1 pilot ratio, ultra-restrictive counterbalance valve
- PVDB - Ventable, pilot-operated, pressure reducing/relieving valve



The circuits show a standard counterbalance valve as a bypass on a cylinder activated by the pressure for a hydraulic saw or drill motor.

- Standard counterbalance valve: CB**
- Ventable reducing relieving valve: PV*B

Benefits of this circuit arrangement:

- Fig.1 The motor may be for a drill or a saw. The speed of the feeding cylinder is reduced when the pressure to drive the motor exceeds a pressure that is adjustable on the counterbalance valve. A variety of counterbalance valves are offered to allow stable interaction between two circuits.
- Fig.2 The counterbalance valve can also control a pressure-reducing valve type PV*B to control the feed/clamping cylinder.

For Sun technical support, contact Bernhard Kristen.