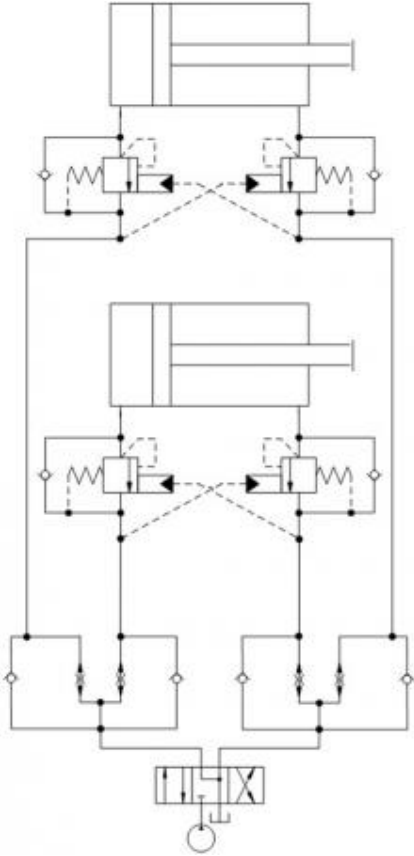


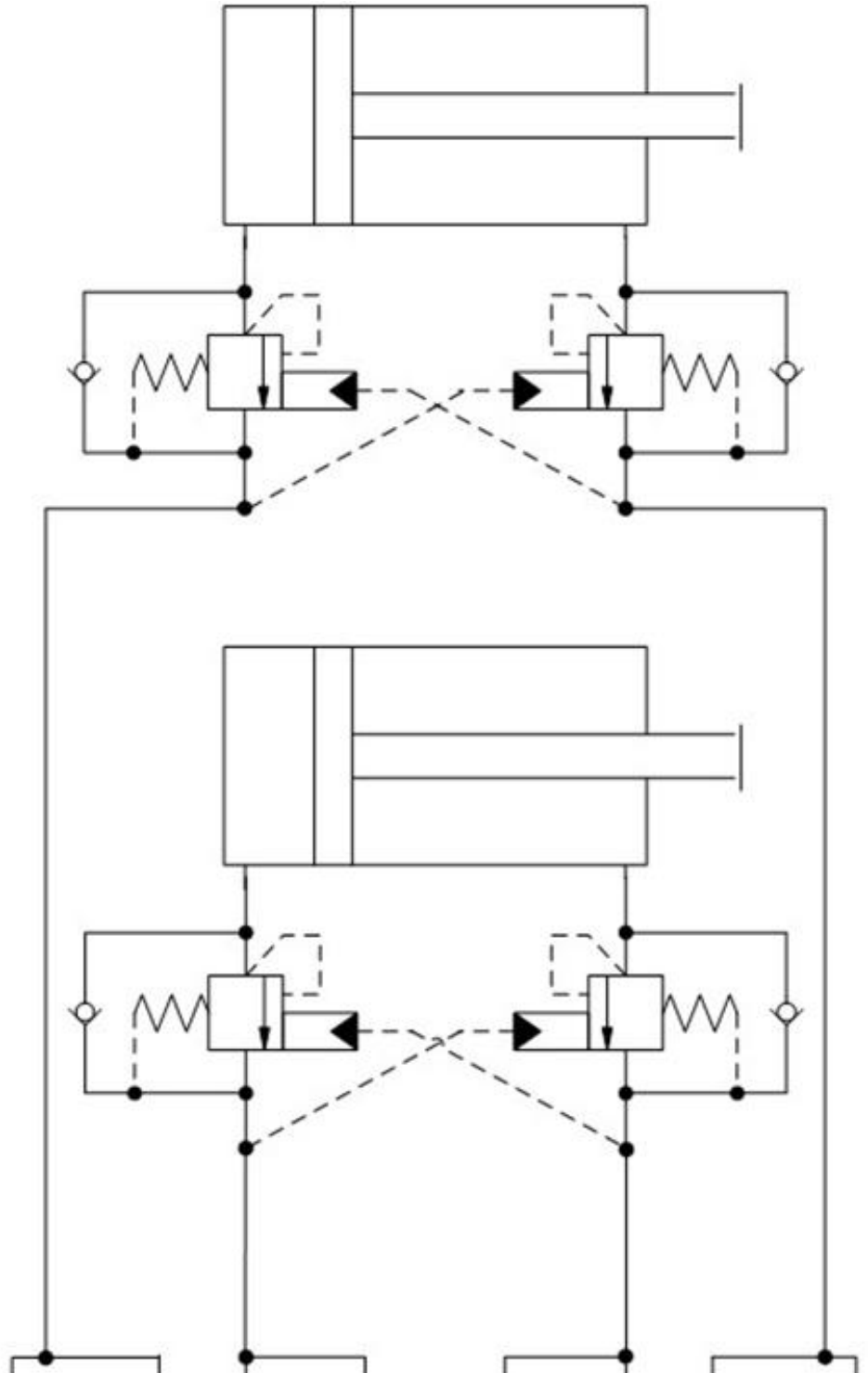
Prepared for :

Prepared by :

Schematics



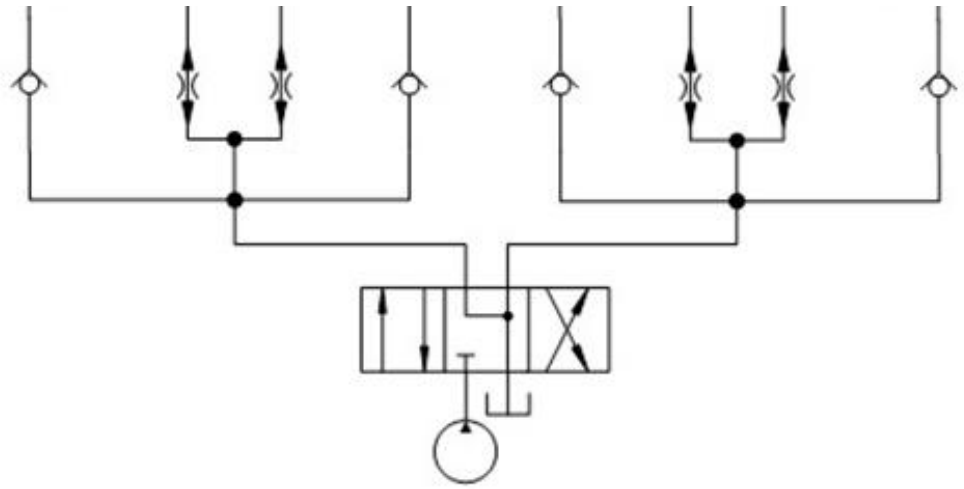
Summary



Related Products

Cartridges

- FSBD - High accuracy flow divider valve
- CBAA - 3:1 pilot ratio, ultra-restrictive counterbalance valve
- CXAA - Free flow nose to side check valve - pilot capacity



This example shows flow dividers with reverse free-flow check valves and cylinders with counterbalance valves.

- **Flow divider valve :** FS*D
- **Counterbalance valve :** CB**
- **Check valve:** CX**

Benefits of this circuit arrangement:

- Flow divider valves FS control the meter in flow to the cylinders. CBVs with internal drains can be used in the return lines since the CX check valves in the return lines feed the return flow back to tank.
- Flow dividers and CBVs are used on both sides of the cylinders for the controlled extension and retraction of the cylinders.

Note: The cylinders are both the same size. Different flow dividers for extension and retraction can be sized for each actual flow requirement.

For Sun technical support, contact Steve Weber.