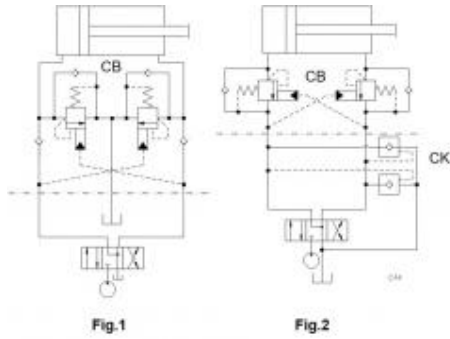


Prepared for :

Prepared by :

Schematics

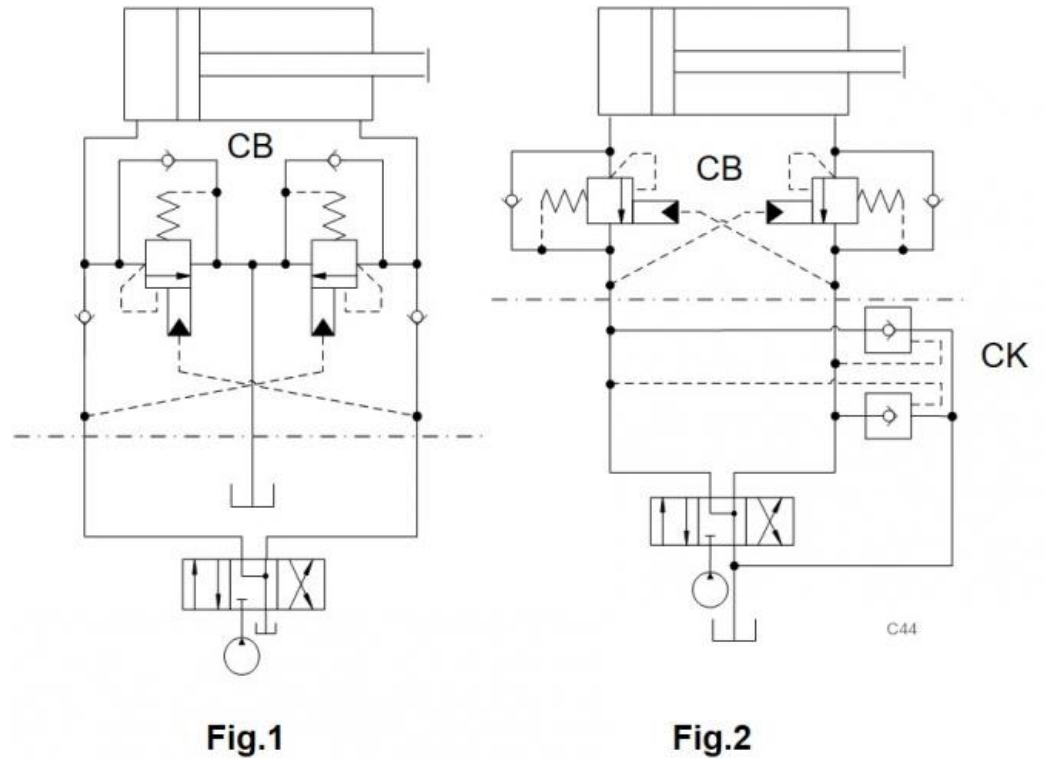


Related Products

Cartridges

- CKBB - Pilot-to-open check valve with standard pilot
- CBBB - 1.5:1 pilot ratio, semi-restrictive counterbalance valve

Summary



The example shows two circuits that deal with pressure in the return line of counterbalance valves.

- Counterbalance valve: **CB****
- Pilot-to-open Check: **CK*B**

Benefits of this circuit arrangement:

- **Figure 1** shows a cushion lock circuit that does not require vented counterbalance valves since the standard CBs in this circuit are always connected to tank. The cylinder can be controlled with a proportional directional valve if required.
- **Figure 2** shows two pilot-to-open check valves in parallel to the directional valve that divert the return flow of the cylinder to the tank line as shown in the circuit. The CK valves reduce the return flow through the directional control valve. A proportional directional valve could thus be used if required.

For Sun technical support, contact Bernhard Kristen.